

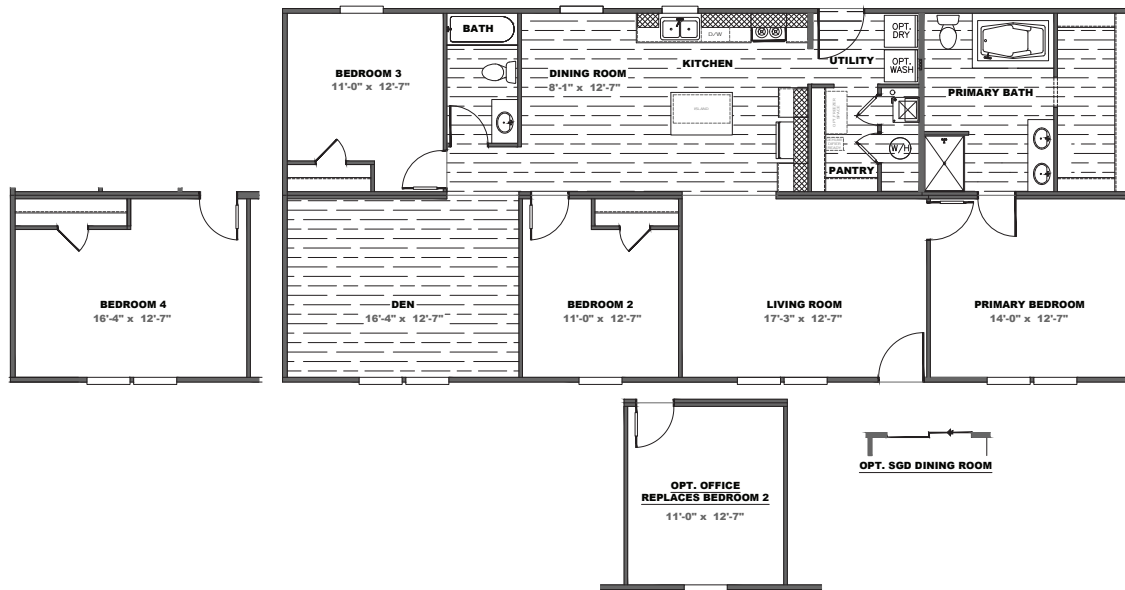
# EAGLE

SERIES

Appalachia  
myappalachiahome.com

## THE EAGLE 60

3/4 beds | 2 baths | 1,580 sq. ft. | 28x60



### POPULAR STANDARD FEATURES

- 8' Flat Ceilings
- 30" Overhead DuraCraft Cabinets
- Picture Frame Cabinet Doors (w/ Hidden Hinges)
- Kitchen Island w/ Overhang
- Glamour Bath w/ Montrose Fiberglass Tub
- 6 Panel Steel Front Door
- 2 Panel Arched Interior Door
- Cottage Rear Door w/ 9 Light Window
- Low E Argon Gas Insulated Windows
- ecobee Smart Thermostat Lite 5
- Exterior GFI Recept
- Double Marriage Wall Construction
- 5.2lb. Rebond Pad
- Dishwasher
- Smooth Top Range
- Walk-In Pantry
- 25 oz. R2X Stain Resistant Carpet

### AVAILABLE OPTIONS

- OSB Wrap
- Dormer
- Sliding Glass Door (Model Specific)
- 2x6 Sidewalls with R-21 Insulation
- Recessed Frame
- Front Storm Door (Ship Loose)
- Wind Zone II w/OSB
- Wind Zone III w/OSB
- 2" Mini Blinds
- Stainless Steel Appliances
- Side by Side Refrigerator
- Ice maker
- Gas Range
- Gas Furnace
- 50 Gallon Water Heater
- Exterior GFI (Front)
- Exterior Faucet (Front/Rear)
- Water Cut Offs
- Elongated Commodes
- Omit Tub (Primary Bath)
- Ceramic Sinks
- Fiberglass Tub/Showers
- Energy Star Ceiling Fans
- Wire and Brace
- Optional Office (Where Applicable)
- Wire Shelving in Utility Room
- Washer/Dryer

#### SIDING

- \_\_\_\_\_

#### DECOR PACKAGES

- Brown
- White
- Grey

#### ADDITIONAL VINYL FLOORING

- Throughout
- Living Room
- Primary Bedroom
- Secondary Bedrooms: #s \_\_\_\_\_

\*Please reference website for colors

#### SHUTTERS

- \_\_\_\_\_

eBuilt  
Clayton Built

Customer Name \_\_\_\_\_ Customer County/State \_\_\_\_\_

Customer Email \_\_\_\_\_ Customer Signature \_\_\_\_\_