

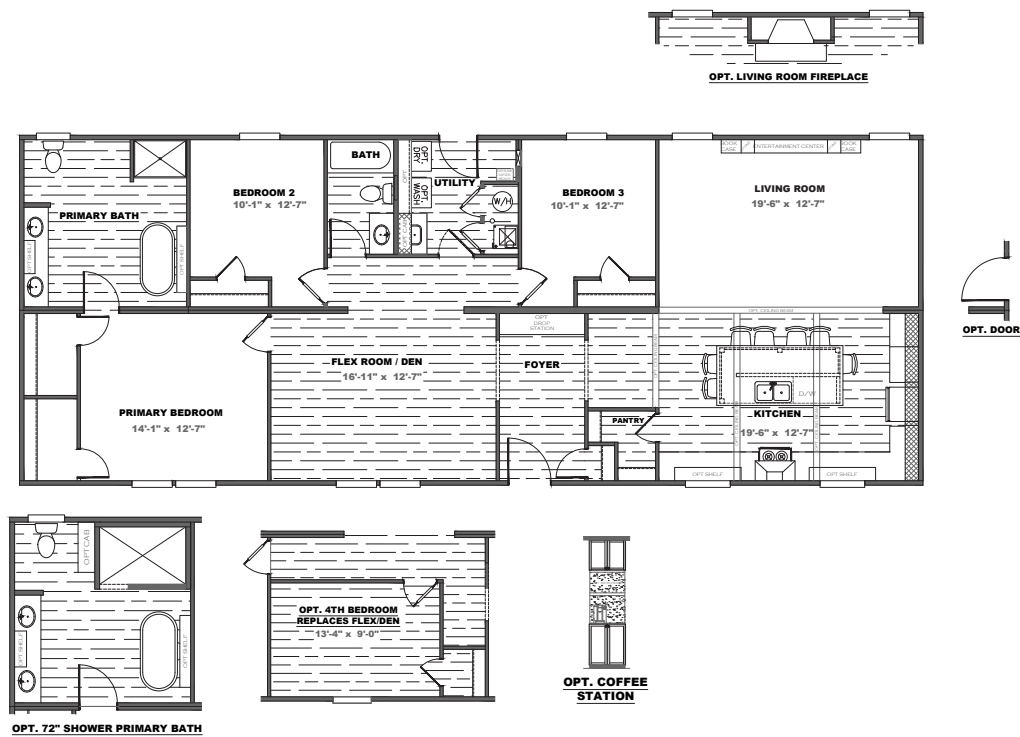
Fusion

SERIES

FUSION 68



FSN28683A | 3/4 beds | 2 baths | 1,790 sq. ft. | 28x68



STANDARD FEATURES

- 8' Flat Ceilings
- 2x6 16 O.C. Floor Joists
- 42" Overhead DuraCraft® Cabinets
- Traditional Cabinet Doors (w/Hidden Hinges)
- Kitchen Island w/Overhang
- Double Primary Bath Sinks
- Glamour Bath w/Fiberglass Montrose Tub
- 6 Panel Steel Front Door
- Cottage Rear Door w/9 Light Window
- Argon Gas Low-E Windows
- Beauflor Floor Vinyl
- ecobee Smart Thermostat®
- Double Marriage Wall Construction
- Exterior GFI Recept (Rear Sidewall)
- 5.2 lb. Rebond Pad
- Vinyl Entry
- 25 oz. R2X Stain Resistant Carpet
- Dishwasher
- Smooth Top Range
- SmartComfort® Furnace by Carrier®
- Kwikset® Smart Key Security
- Samsung® Appliances
- Rheem® Water Heater
- Pfister® Faucets
- eBuilt®



STANDARD WITH

- Whole House Ventilation
- Rheem® Hybrid Heat Pump Water Heater
- Argon Gas Low-E Windows
- Exterior Door Insulation
- ecobee Smart Thermostat®
- SmartComfort® Furnace by Carrier®
- LED Lighting
- Solar Ready
- Dehumidifier Ready (Zone 1 STD)
- Pfister® Water Saving Fixtures
- Zero Ready Insulation Package
- Sealed Duct System
- ENERGY STAR® Dishwasher and Refrigerator (If Needed)
- ENERGY STAR® Ventilation Fans
- ENERGY STAR® Ready

AVAILABLE OPTIONS

(Some Options Not Available on Display Units)

- Grey Exterior Package
- Bronze Windows
- White Board and Batten
- Columns
- Awning Above LR Window
- Craftsmen Shutters
- OSB Wrap
- 2x6 Sidewalls w/R21 Insulation
- Dormer
- Wind Zone II w/OSB Wrap
- Wind Zone III w/OSB Wrap
- Sliding Glass Door
- Drip Edge
- Front Storm Door (Ship Loose)
- Recessed Frame
- 2" Mini Blinds
- Microwave
- Side-By-Side Refrigerator
- Gas Range
- Icemaker
- White Farm House Sink with Sprayer
- Stainless Steel Apron Sink
- Finished Overhead Cabinets
- Lined Base Center Shelves
- Upgrade Cabinet Pulls Kitchen /Throughout
- Built-in Coffee Station with Microwave (Select Models)
- Gas Furnace
- Exterior GFI Recept (Front)
- Outside Faucet (Front/Rear)
- Water Cut-Off Valves t/o
- 50 Gallon Hybrid Heat Pump Water Heater
- Ceramic Sinks
- Elongated Commodes
- Fiberglass Tubs/Showers
- Shower Only w/Linen Shelves (Primary)
- Six 3 Tile Walk-In Shower
- Shower Only Hall Bath
- ENERGY STAR® Ceiling Fans (LR/PBR/DEN)
- Chair Rail (DR)
- Wire & Brace (Bedrooms)
- Double Shelving in Closets
- Shoe Racks (Where Applicable)
- Entertainment Center with Cabinets
- Entertainment Center with Half-Stack Stone
- Entertainment Center with Stone Columns
- Entertainment Center with Stone and Bookcases
- Stone Fireplace
- Contemporary Entertainment Center (Model Specific)
- Bookcases (Where Applicable)
- Utility Cabinet (Where Applicable)
- Optional Office (Where Applicable)
- Utility Room Door
- Wire Shelving Over
- Flash Package

ADDITIONAL VINYL FLOORING

- Throughout
- Living Room
- Primary Bedroom
- Secondary Bedrooms
- #'s _____

OTHER

- _____
- _____
- _____

DECOR SELECTION

WALL BOARDS

COUNTERTOPS

FLOOR VINYL

SIDING

CABINETS

ISLAND

CARPET

SHUTTERS

Please refer to our Design Center or the Product Book for Colors



Customer Name _____

Customer Phone # _____

Customer Email _____

Customer Signature _____