

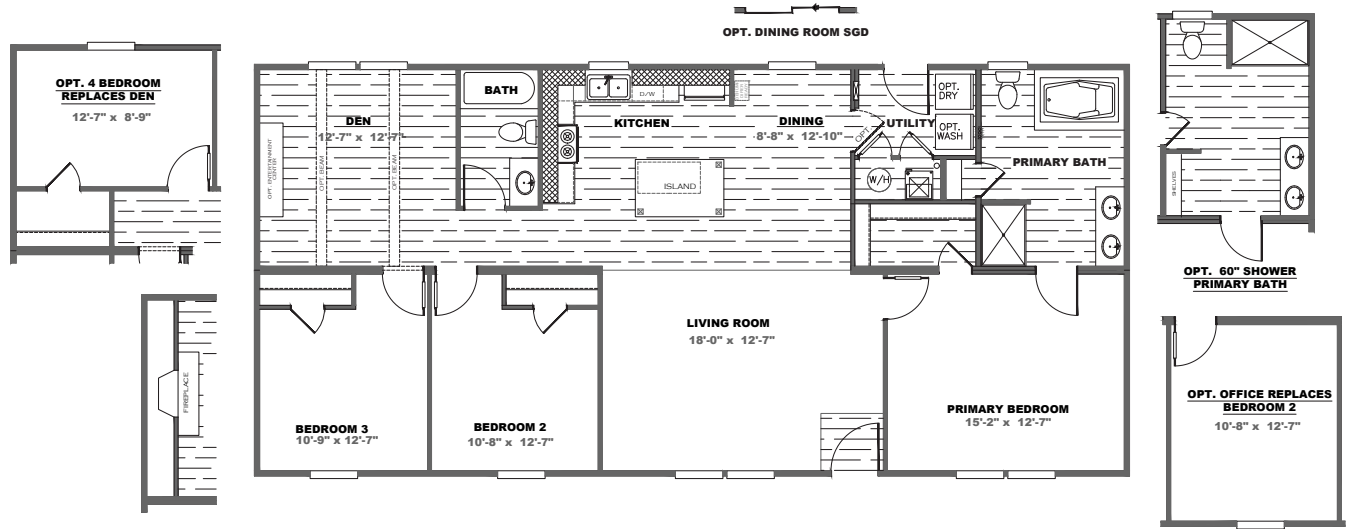
# TRADITION

## SERIES

# THE TRADITION 56D



TRA28563D | 3 beds | 2 baths | 1,474 sq. ft. | 28x56



## STANDARD FEATURES

- 8' Flat Ceilings
- 2x6 16 O.C. Floor Joists
- 30" Overhead DuraCraft® Cabinets
- Traditional Cabinet Doors (w/Hidden Hinges)
- Kitchen Island w/Overhang
- Double Primary Bath Sinks
- Glamour Bath w/Fiberglass Montrose Tub
- 6 Panel Steel Front Door
- Cottage Rear Door w/9 Light Window
- Argon Gas Low-E Windows
- Beauflor Floor Vinyl
- ecobee Smart Thermostat®
- Double Marriage Wall Construction
- Exterior GFI Recept (Rear Sidewall)
- 5.2 lb. Rebond Pad
- Vinyl Entry
- 25 oz. R2X Stain Resistant Carpet
- Dishwasher
- Smooth Top Range
- SmartComfort® Furnace by Carrier®
- Kwikset® Smart Key Security
- Samsung® Appliances
- Rheem® Water Heater
- Pfister® Faucets
- eBuilt®





## STANDARD WITH

- Whole House Ventilation
- Rheem® Hybrid Heat Pump Water Heater
- Argon Gas Low-E Windows
- Exterior Door Insulation
- ecobee® Smart Thermostat®
- SmartComfort® Furnace by Carrier®
- LED Lighting
- Solar Ready
- Dehumidifier Ready (Zone 1 STD)
- Pfister® Water Saving Fixtures
- Zero Ready Insulation Package
- Sealed Duct System
- ENERGY STAR® Dishwasher and Refrigerator (If Needed)
- ENERGY STAR® Ventilation Fans
- ENERGY STAR® Ready

- ☐ OSB Wrap
- ☐ 2x6 Sidewalls w/R21 Insulation
- ☐ Dormer
- ☐ Wind Zone II w/OSB Wrap
- ☐ Wind Zone III w/OSB Wrap
- ☐ Sliding Glass Door
- ☐ Drip Edge
- ☐ Front Storm Door (Ship Loose)
- ☐ Recessed Frame
- ☐ 2" Mini Blinds
- ☐ Microwave
- ☐ Side-By-Side Refrigerator
- ☐ Gas Range
- ☐ Icemaker
- ☐ White Farm House Sink with Sprayer
- ☐ Stainless Steel Apron Sink
- ☐ Finished Overhead Cabinets
- ☐ Lined Base Center Shelves
- ☐ Built-in Coffee Station w/ Microwave (Select Models)
- ☐ Upgrade Cabinet Pulls Kitchen /Throughout
- ☐ Gas Furnace
- ☐ Exterior GFI Recept (Front)
- ☐ Outside Faucet (Front/Rear)
- ☐ Water Cut-Off Valves t/o
- ☐ 50 Gallon Water Heater
- ☐ Ceramic Sinks
- ☐ Elongated Commodes
- ☐ Fiberglass Tubs/Showers
- ☐ Shower Only w/Linen Shelves (Primary)
- ☐ Shower Only Hall Bath
- ☐ ENERGY STAR® Ceiling Fans (LR/PBR)
- ☐ Chair Rail (DR)
- ☐ Wire & Brace (Bedrooms)
- ☐ Double Shelving in Closets
- ☐ Shoe Racks (Where Applicable)
- ☐ Entertainment Center with Cabinets
- ☐ Entertainment Center with Half-Stack Stone
- ☐ Entertainment Center with Stone Columns
- ☐ Stone Fireplace
- ☐ Optional Office (Where Applicable)

- ☐ Utility Room Door
- ☐ Wire Shelving Over Washer and Dryer
- ☐ Optional Primary Bath Door (Select Locations)
- ☐ Flash Package

## ADDITIONAL VINYL FLOORING

- ☐ Throughout
- ☐ Living Room
- ☐ Primary Bedroom
- ☐ Secondary Bedrooms
- ☐ #'s \_\_\_\_\_

## OTHER

- ☐ \_\_\_\_\_
- ☐ \_\_\_\_\_
- ☐ \_\_\_\_\_

WALL BOARDS

COUNTERTOPS

FLOOR VINYL

SIDING

CABINETS

ISLAND

CARPET

SHUTTERS

\*Please refer to our Design Center or the Product Book for Colors\*



Customer Name \_\_\_\_\_ Customer Phone # \_\_\_\_\_

Customer Email \_\_\_\_\_ Customer Signature \_\_\_\_\_