

**OPT. COFFEE STATION**

**SALES LITERATURE**

**Clayton** Clayton - 934  
1420 Mountain Rd, Andersonville, TN 37705  
PH: 865.494.7800 FAX: 865.494.0243

HILBORN, WERNER, CARTER,  
AND ASSOCIATES, INC.  
1627 SOUTH MYRTLE AVE.  
CLEARWATER, FL. 33756

DRAWING #: 34M298

MODEL #: FSN32603A

DATE: 11/01/2023

SCALE: N.T.S.

MODEL: FUSION 3260 (32'X60')

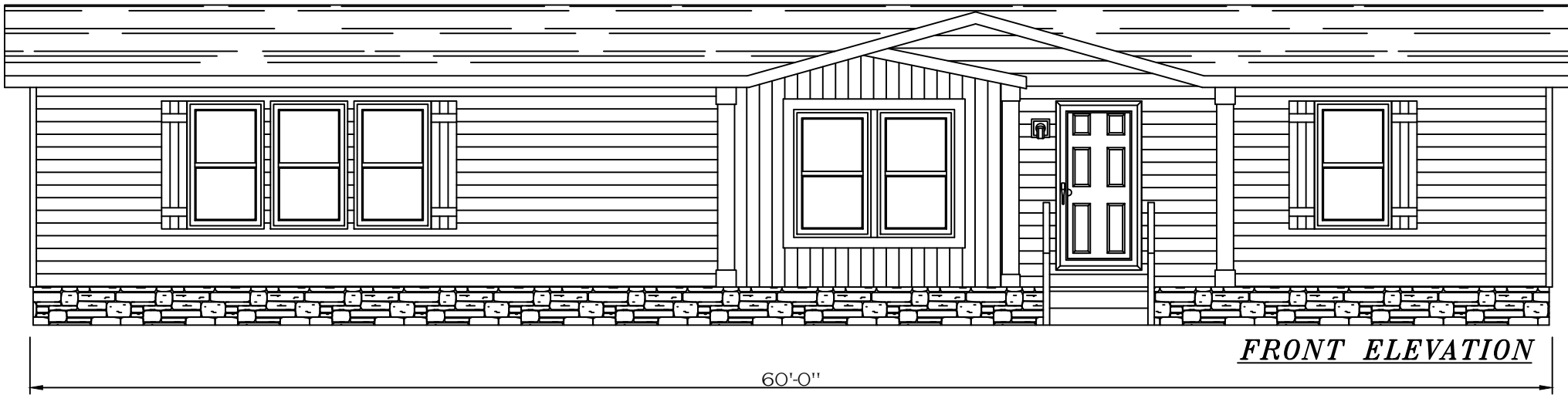
SERIES: FUSION

PRODUCT DESIGNER: DANIEL C. SHELDON

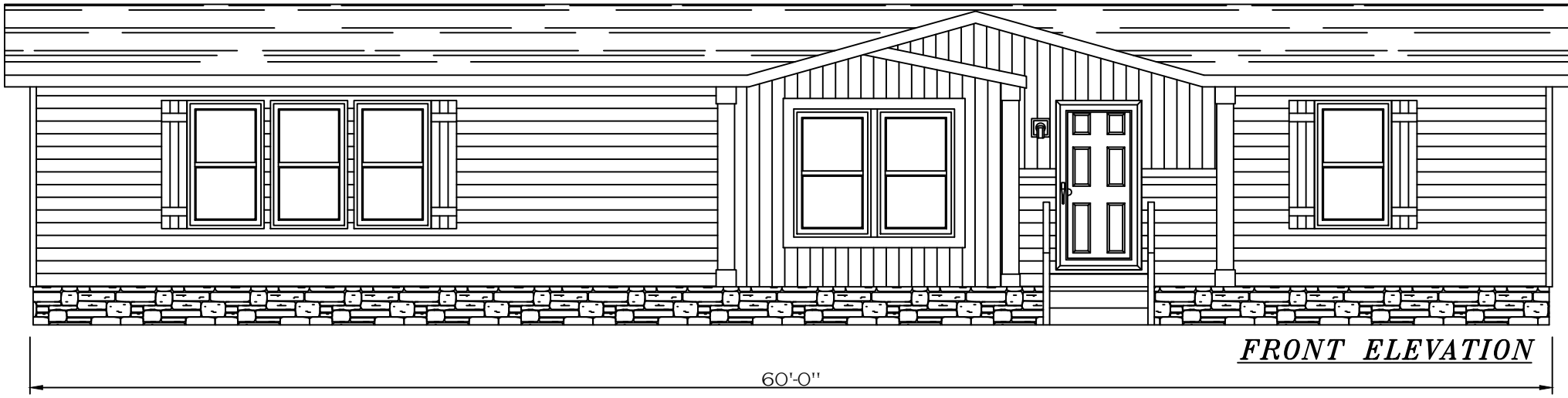
STD PLAN "CONDITIONED": 1,800 FT<sup>2</sup>

REV. BY:


REV. DATE:

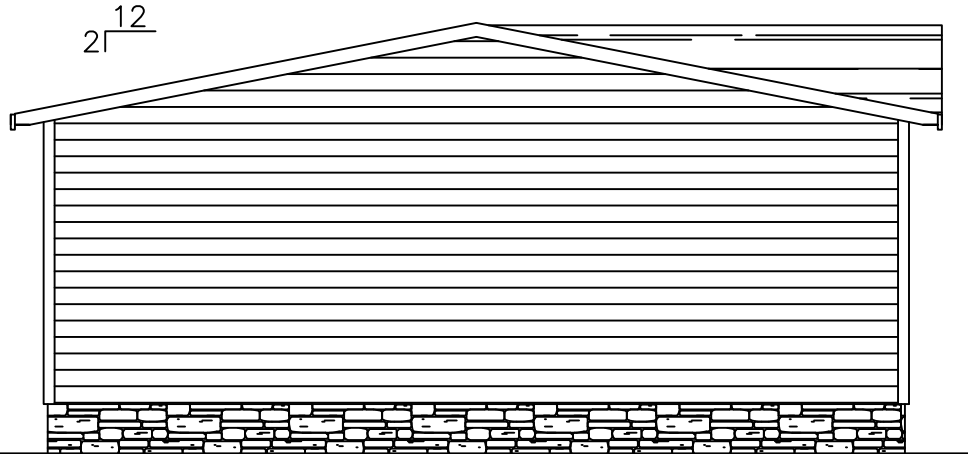


*FRONT ELEVATION*



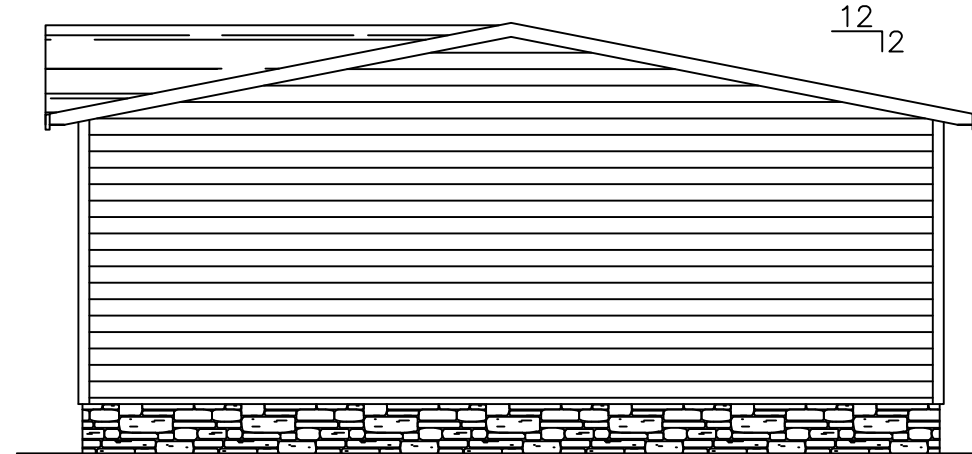
*FRONT ELEVATION*

FRONT ELEVATION	 Clayton - 934 1420 Mountain Rd, Andersonville, TN 37705 PH: 865.494.7800 FAX: 865.494.0243	HILBORN, WERNER, CARTER, AND ASSOCIATES, INC. 1627 SOUTH MYRTLE AVE. CLEARWATER, FL. 33756	DRAWING # 34M2??-FP	MODEL: FUSION 3260 (32'X60')	STD PLAN "CONDITIONED": 1,800 FT <sup>2</sup>
			MODEL # FSN32603A	SERIES: FUSION	REV. BY:
			DATE: 08/25/2023	SCALE: N.T.S.	PRODUCT DESIGNER: DANIEL C. SHELDON
					REV. DATE:



***LEFT SIDE ELEVATION***

26'-4"



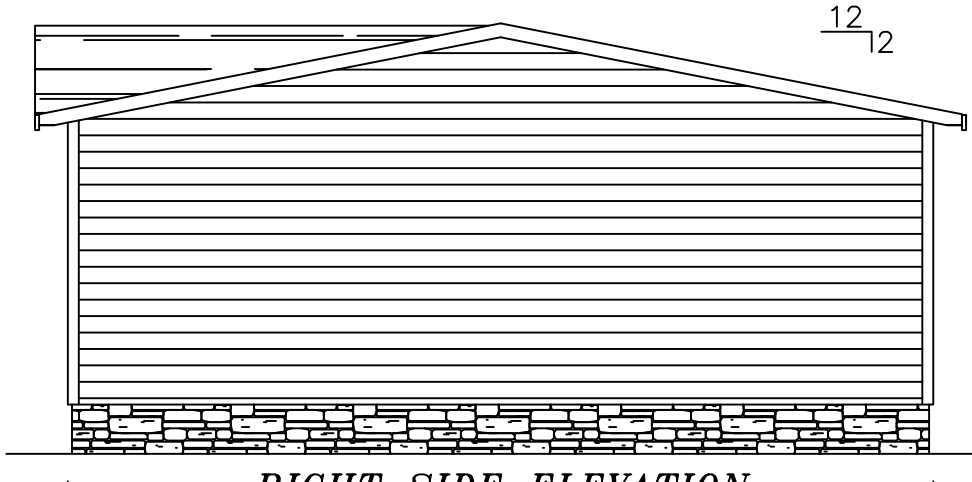
***RIGHT SIDE ELEVATION***

26'-4"




***LEFT SIDE ELEVATION OPTIONAL DOOR***

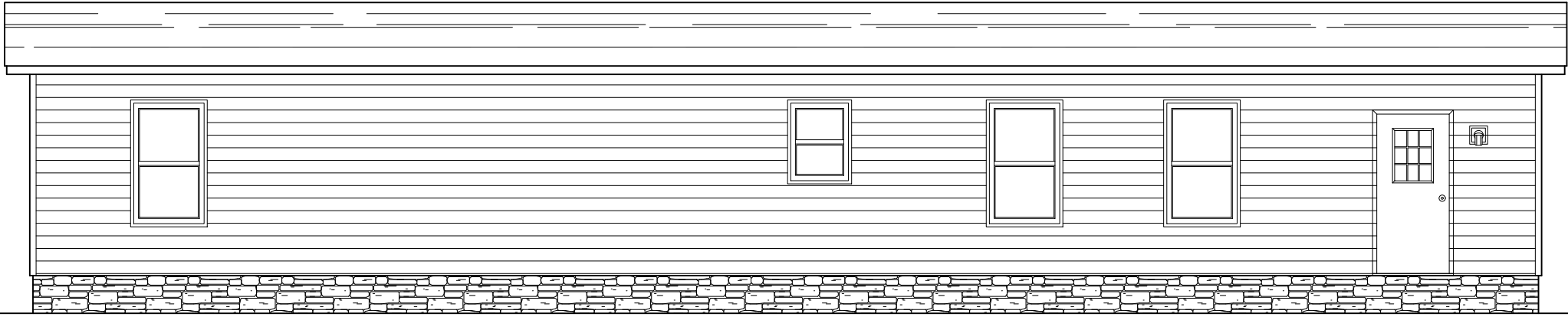
26'-4"



***RIGHT SIDE ELEVATION***

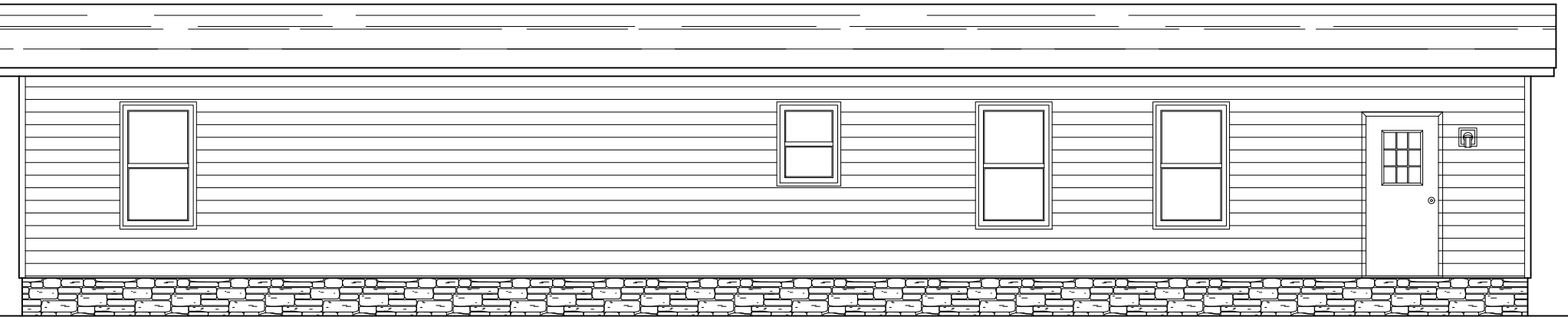
26'-4"

<p><b>FRONT ELEVATION</b></p>	 Clayton - 934 1420 Mountain Rd, Andersonville, TN 37705 PH: 865.494.7800 FAX: 865.494.0243	<p>HILBORN, WERNER, CARTER, AND ASSOCIATES, INC. 1627 SOUTH MYRTLE AVE. CLEARWATER, FL. 33756</p>		<p>DRAWING # 34M2??-FP</p>	<p>MODEL: FUSION 3260 (32'X60')</p>	<p>STD PLAN "CONDITIONED": 1,800 FT²</p>
		<p>MODEL # FSN32603A</p>	<p>SERIES: FUSION</p>	<p>REV. BY:</p>		
		<p>DATE: 08/25/2023</p>	<p>SCALE: N.T.S.</p>	<p>PRODUCT DESIGNER: DANIEL C. SHELDON</p>	<p>REV. DATE:</p>	




***REAR ELEVATION OPTIONAL DOOR***

60'-0"



***REAR ELEVATION OPTIONAL DOOR***

60'-0"

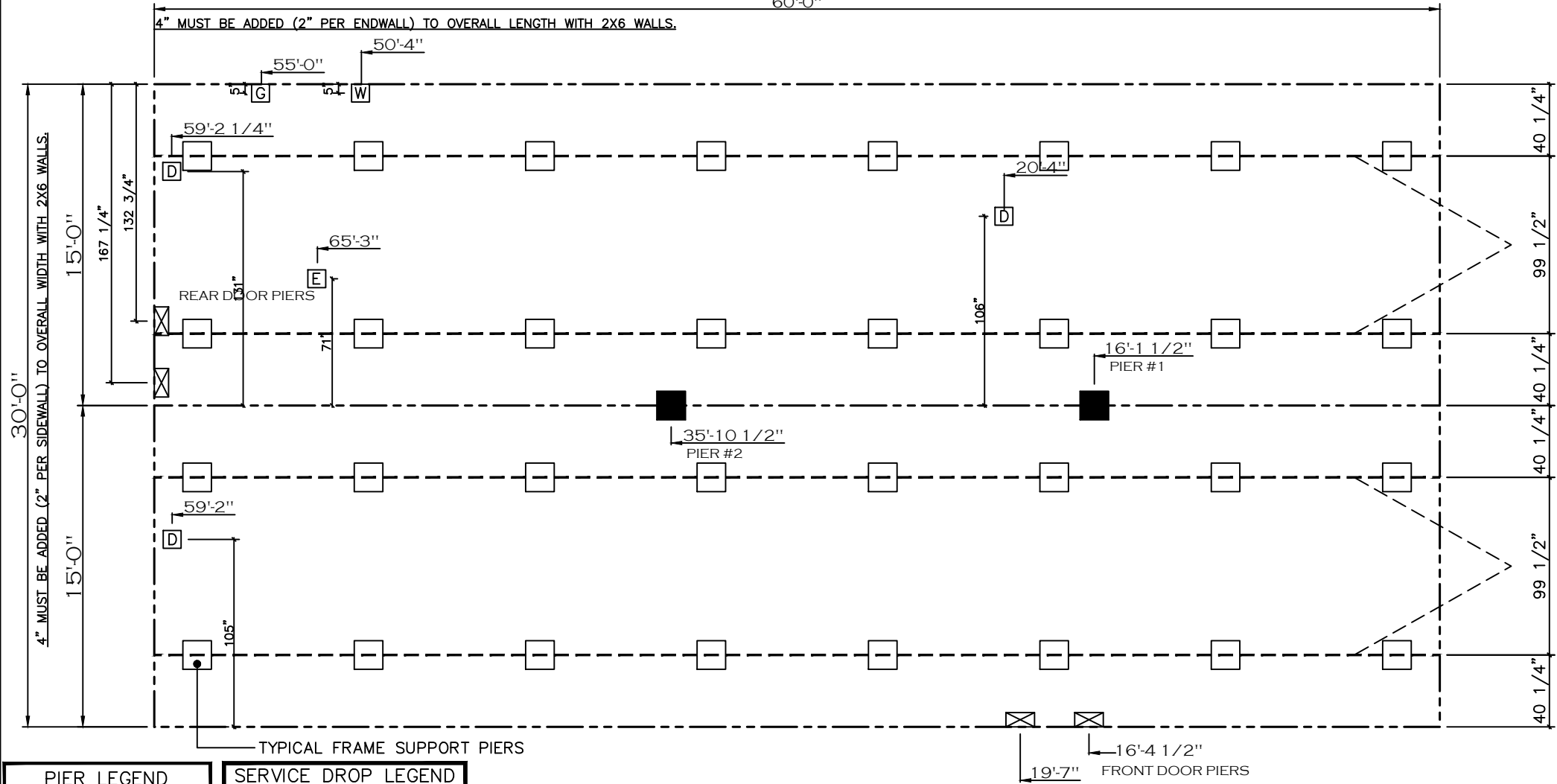
FRONT ELEVATION	 Clayton - 934 1420 Mountain Rd, Andersonville, TN 37705 PH: 865.494.7800 FAX: 865.494.0243	HILBORN, WERNER, CARTER, AND ASSOCIATES, INC. 1627 SOUTH MYRTLE AVE. CLEARWATER, FL. 33756	DRAWING #: 34M2??-FP	MODEL: FUSION 3260 (32'X60')	STD. PLAN "CONDITIONED": 1,800 FT <sup>2</sup>
			MODEL #: FSN32603A	SERIES: FUSION	REV. BY:
			DATE: 08/25/2023	SCALE: N.T.S.	PRODUCT DESIGNER: DANIEL C. SHELDON
					REV. DATE:

**GENERAL NOTES:**

1. PIER LOADS SHOWN ARE TO BE USED TO SIZE THE FOOTINGS BELOW THE MARRIAGEWALL FOR COLUMN SUPPORT PIERS. REFER TO TABLES 6b AND 6c IN THE INSTALLATION MANUAL FOR LOAD ON FRAME PIER FOOTINGS FOR HOMES THAT DO NOT REQUIRE PERIMETER BLOCKING. REFER TO TABLES 7b AND 7c IN THE INSTALLATION MANUAL FOR LOAD ON FRAME PIER FOOTINGS THAT REQUIRE PERIMETER BLOCKING. REFER TO TABLES 10 AND 10a TO DETERMINE FOOTING SIZE FOR ALL PIERS.

2. REFER TO TABLE 9 FOR PIER CONFIGURATION AND MAXIMUM ALLOWABLE HEIGHTS. CROSS REFERENCE THE PIER HEIGHT WITH THE MAXIMUM ALLOWABLE FLOOR HEIGHT LISTED IN THE FRAME TIEDOWN CHARTS (TABLE 18, 19, AND 20).  
 3. FLOOR WIDTH SHOWN IS FOR STANDARD PRODUCT ONLY. CONTACT THE MFG PLANT FOR SPECIFICATIONS OF OPTIONS ORDERED.  
 4. SERVICE DROP LOCATIONS IDENTIFIED ARE APPROXIMATE.  
 5. THE MAXIMUM SPACING FOR FRAME SUPPORT PIERS FOR 8" I-BEAMS IS 8 FEET, 10" & 12" I-BEAMS ARE 10 FEET.

20 psf Roof Live Load		
Column Pier #	Distance from Hitch	Pier Load (lbs)
1	16.083	4863
2	35.917	4863



PIER LEGEND	
□	= SUPPORT UNDER MATING OPENING
■	= SUPPORT AT MATING COLUMN
⊗	= SUPPORT UNDER MATING WALL
■	= PIER PORCH/RECESSED ENTRY
□	= PIER MAIN BEAM
⊗	= PIER PERIMETER

SERVICE DROP LEGEND	
E	= ELECTRICAL DROP
W	= WATER INLET
D	= DWV PLUMBING DROP
G	= GAS INLET

20 lb ROOF LOAD SIDEWALL OPENING PIER LOAD 28' BOX WIDTH	SIDEWALL OPENING (FT) REQUIRED PIER LOAD (LBS)					
	3	4	5	6	8	10
	1162	1315	1467	1620	1925	2230

\*FOR 30 lb & 40 lb ROOF LOAD REFER TO TABLES 7b & 7c IN THE INSTALLATION MANUAL.

PIER LOADS	Clayton - 934 1420 Mountain Rd, Andersonville, TN 37705 PH: 865.494.7800 FAX: 865.494.0243	HILBORN, WERNER, CARTER, AND ASSOCIATES, INC. 1627 SOUTH MYRTLE AVE. CLEARWATER, FL. 33756	DRAWING #: 34M2??-FP	MODEL: FUSION 3260 (32'x60')	STD PLAN "CONDITIONED": 1,800 FT²
			MODEL #: FSN32603A	SERIES: FUSION	REV. BY:
			DATE: 08/25/2023	SCALE: N.T.S.	PRODUCT DESIGNER: DANIEL C. SHELDON