

OPT. 72" MASTER BATH

MASTER BATH

MASTER BATH

(OPT.) MASTER BATH

HALL BATH

REV #	DATE	DESCRIPTION
1	11/18/20	UPDATED TO FIELD NOTES

SHEET: DRAIN

2D DRAIN LINES

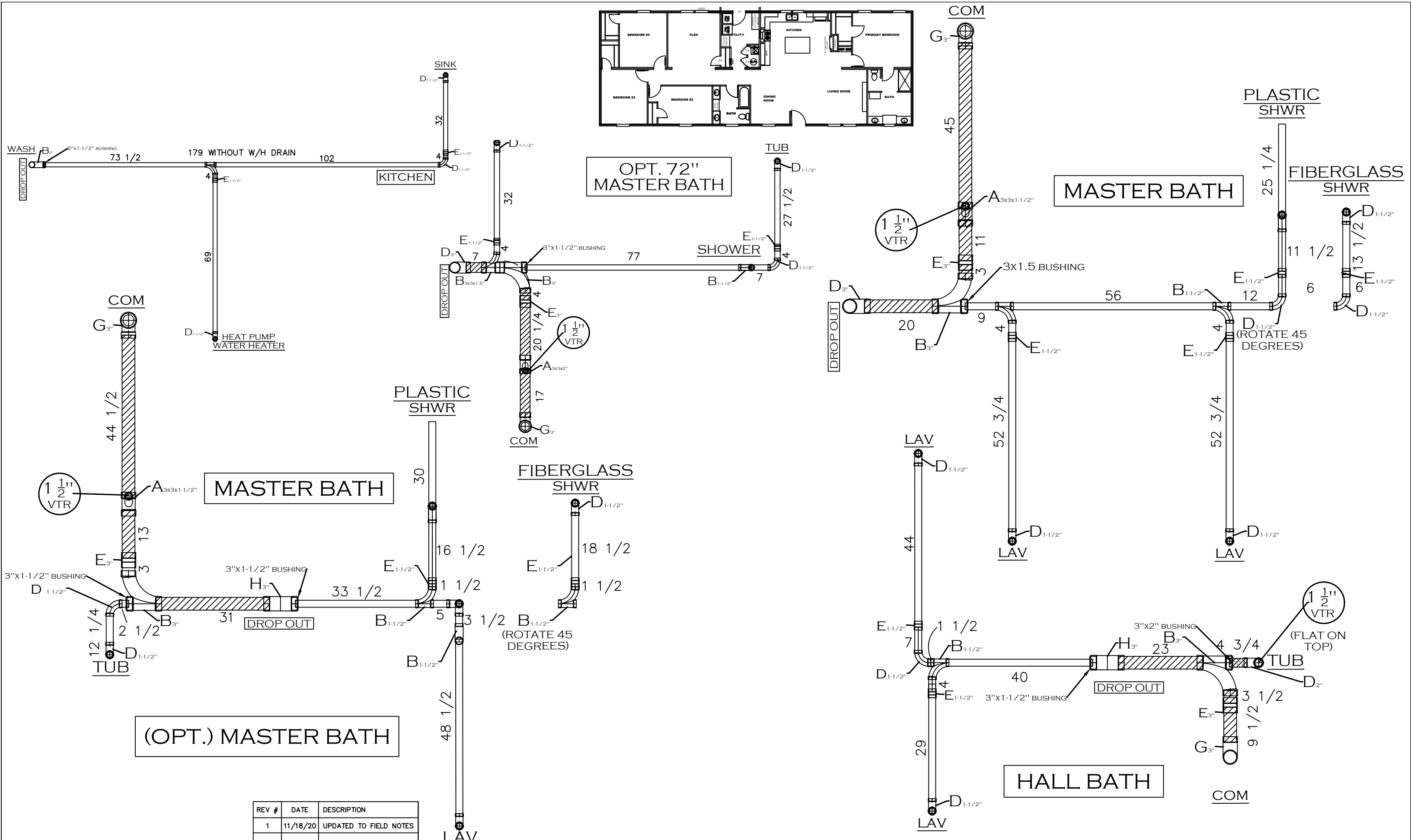
**Clayton** Clayton - 934  
1420 Mountain Rd, Andersonville, TN 37705  
PH: 865.494.7800 FAX: 865.494.0243

HILBORN, WERNER, CARTER,  
AND ASSOCIATES, INC.  
1627 SOUTH MYRTLE AVE.  
CLEARWATER, FL. 33756

DRAWING # 34M222  
MODEL # MVP28724A  
DATE: 03/11/2019 SCALE: N.T.S.

MODEL: 28'X72' ISLAND BREEZE  
SERIES: M.V.P.  
PRODUCT DESIGNER: DANIEL SHELDON

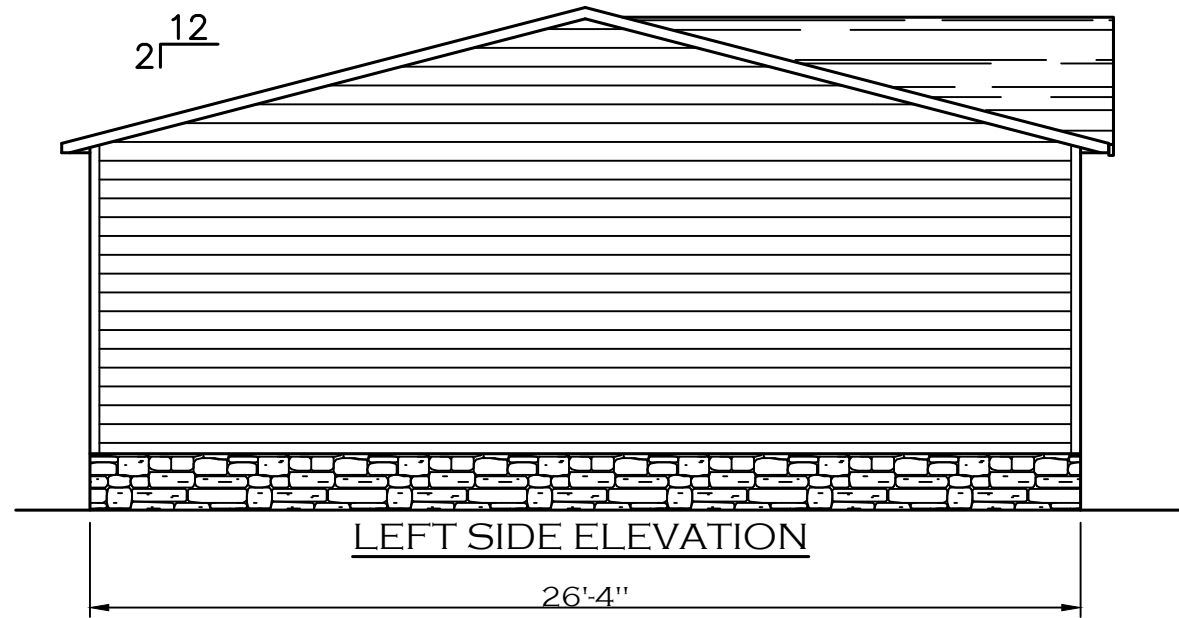
STD PLAN "CONDITIONED": 1,896 FT<sup>2</sup>  
REV. BY: DCS  
REV. DATE: 12/02/2019





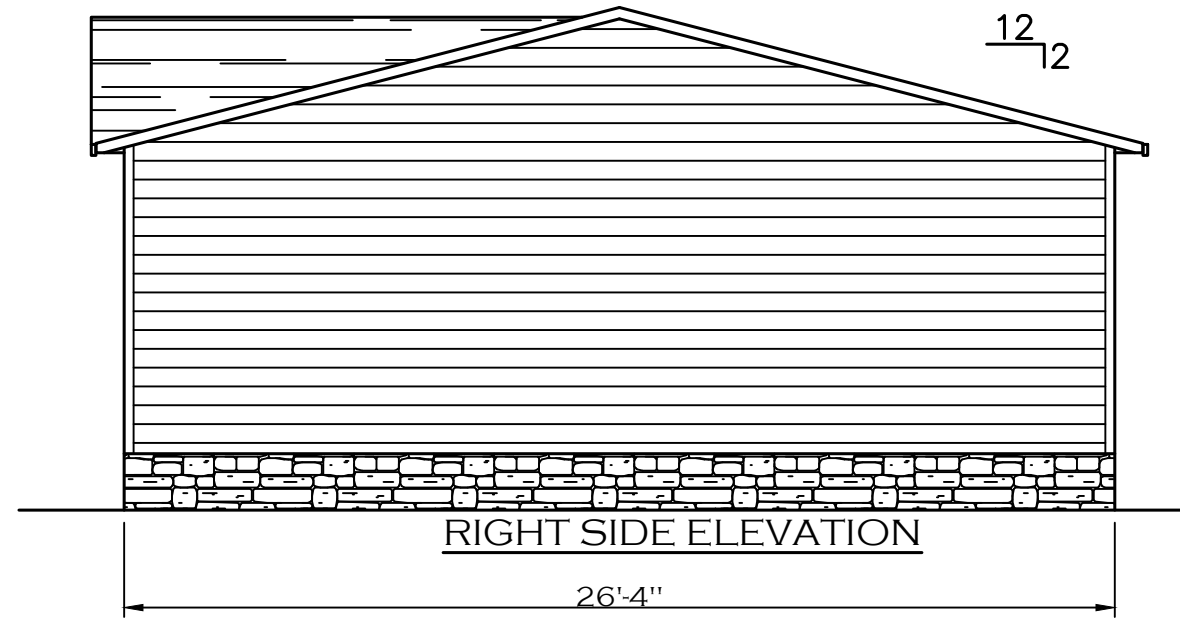
REAR ELEVATION

72'-0"



LEFT SIDE ELEVATION

26'-4"



RIGHT SIDE ELEVATION

26'-4"



FRONT ELEVATION

72'-0"

PRINT DATE: 8/1/2023

SHEET:

CJIG

RIDGEBEAM -  
RAFTER PLAN  
B HALF

**Clayton** Clayton - 934  
1420 Mountain Rd, Andersonville, TN 37705  
PH: 865.494.7800 FAX: 865.494.0243

HILBORN, WERNER, CARTER,  
AND ASSOCIATES, INC.  
1627 SOUTH MYRTLE AVE.  
CLEARWATER, FL. 33756

DRAWING # 34M222

MODEL # MVP28724A

DATE: 08/1/2023

SCALE: N.T.S.

MODEL: 28'X72' ISLAND BREEZE

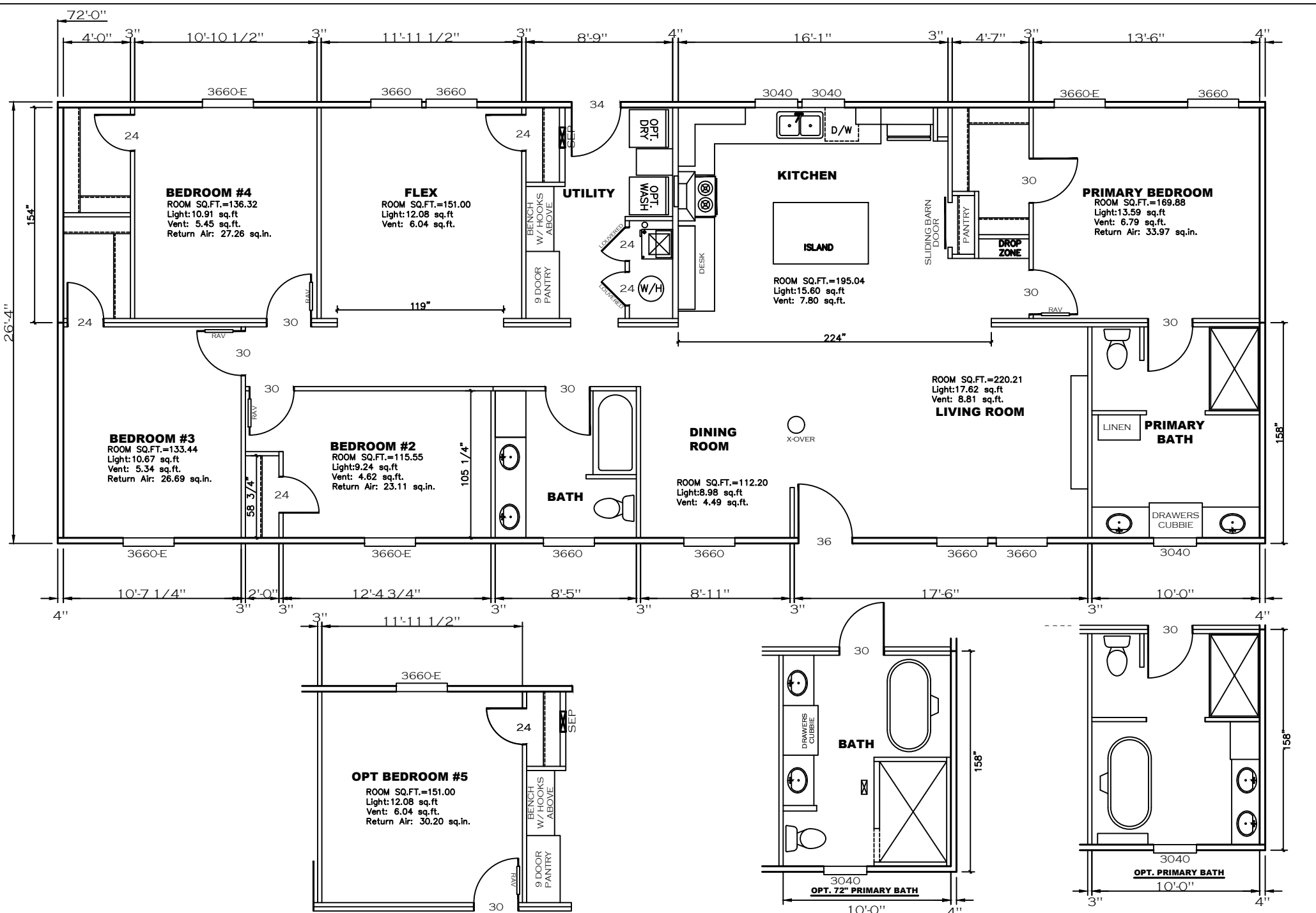
SERIES: M.V.P.

PRODUCT DESIGNER: BRIAN RIFFEY

STD PLAN "CONDITIONED": 1,896 FT<sup>2</sup>

REV. BY:

REV. DATE:



SHEET:	FP	FLOOR PLAN	Clayton - 934 1420 Mountain Rd. Andersonville, TN 37705 PH: 865.494.7800 FAX: 865.494.0243	DRAWING # 34M222-FP		MODEL: 28'x72' ISLAND BREEZE	STD PLAN "CONDITIONED": 1,896 FT <sup>2</sup>
				MODEL # MVP28724A		SERIES: M.V.P.	REV. BY:
PRINT DATE: 6/5/2023				DATE: 5/12/2023	SCALE: N.T.S.	PRODUCT DESIGNER: DANIEL SHELDON	REV. DATE:

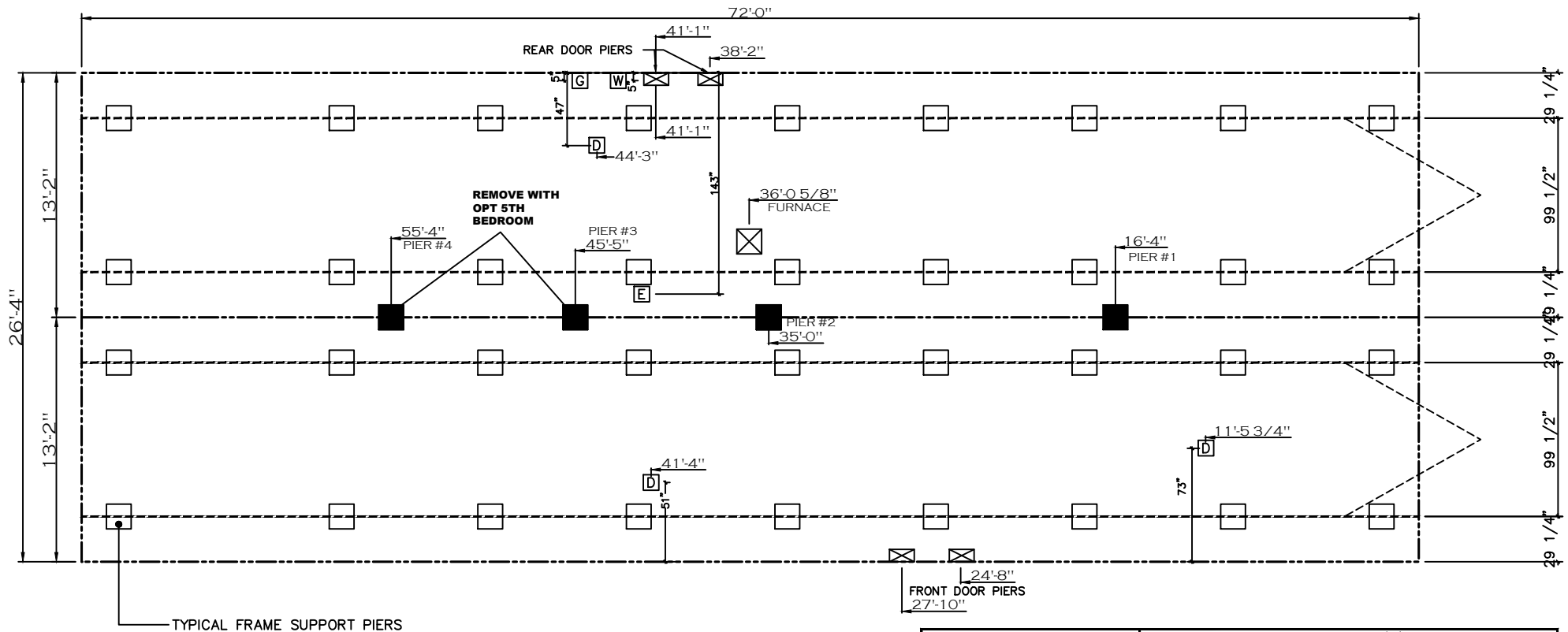
**GENERAL NOTES:**

- PIER LOADS SHOWN ARE TO BE USED TO SIZE THE FOOTINGS BELOW THE MARRIAGEWALL FOR COLUMN SUPPORT PIERS. REFER TO TABLES 6b AND 6c IN THE INSTALLATION MANUAL FOR LOAD ON FRAME PIER FOOTINGS FOR HOMES THAT DO NOT REQUIRE PERIMETER BLOCKING. REFER TO TABLES 7b AND 7c IN THE INSTALLATION MANUAL FOR LOAD ON FRAME PIER FOOTINGS THAT REQUIRE PERIMETER BLOCKING. REFER TO TABLES 10 AND 10a TO DETERMINE FOOTING SIZE FOR ALL PIERS.
- REFER TO TABLE 9 FOR PIER CONFIGURATION AND MAXIMUM ALLOWABLE HEIGHTS. CROSS REFERENCE THE PIER HEIGHT WITH THE MAXIMUM ALLOWABLE FLOOR HEIGHT LISTED IN THE FRAME TIEDOWN CHARTS (TABLE 18, 19, AND 20).
- FLOOR WIDTH SHOWN IS FOR STANDARD PRODUCT ONLY. CONTACT THE MFG PLANT FOR SPECIFICATIONS OF OPTIONS ORDERED.
- SERVICE DROP LOCATIONS IDENTIFIED ARE APPROXIMATE.
- THE MAXIMUM SPACING FOR FRAME SUPPORT PIERS FOR 8" I-BEAMS IS 8 FEET, 10" & 12" I-BEAMS ARE 10 FEET.

20 psf Roof Live Load		
Column Pier #	Distance from Hitch	Pier Load (lbs)
1	16.333	4087
2	35	4087
3	45.417	2375
4	55.417	2375

SERVICE DROP LEGEND	
	E = ELECTRICAL DROP
	W = WATER INLET
	D = DWV PLUMBING DROP
	G = GAS INLET

PIER LEGEND	
	= SUPPORT UNDER MATING OPENING
	= SUPPORT AT MATING COLUMN
	= SUPPORT UNDER MATING WALL
	= PIER PORCH/RECESSED ENTRY
	= PIER MAIN BEAM
	= PIER PERIMETER
	= TIE-DOWN SUPPORT (QTY PER TBL M, SEE DETAIL D-6 IN FOUND. PKG.)



20 lb ROOF LOAD SIDEWALL OPENING PIER LOAD 28' BOX WIDTH	SIDEWALL OPENING (FT) REQUIRED PIER LOAD (LBS)					
	3	4	5	6	8	10
	1175	1330	1485	1640	1950	2260

\*FOR 30 lb & 40 lb ROOF LOAD REFER TO TABLES 7b & 7c IN THE INSTALLATION MANUAL.

PRINT DATE: 7/13/2023

SHEET:	PIER	PIER SET	Clayton - 934 1420 Mountain Rd, Andersonville, TN 37705 PH: 865.494.7800 FAX: 865.494.0243	HILBORN, WERNER, CARTER, AND ASSOCIATES, INC. 1627 SOUTH MYRTLE AVE. CLEARWATER, FL. 33756	DRAWING # 34M222 MODEL # MVP28724A DATE: 07/12/2023	SCALE: N.T.S.	MODEL: 28'X72' ISLAND BREEZE SERIES: M.V.P. PRODUCT DESIGNER: BRIAN K. RIFFEY	STD PLAN "CONDITIONED": 1,896 FT² REV. BY: REV. DATE:
--------	------	----------	--------------------------------------------------------------------------------------------------	-----------------------------------------------------------------------------------------------------	-----------------------------------------------------------	---------------	-------------------------------------------------------------------------------------	-------------------------------------------------------------