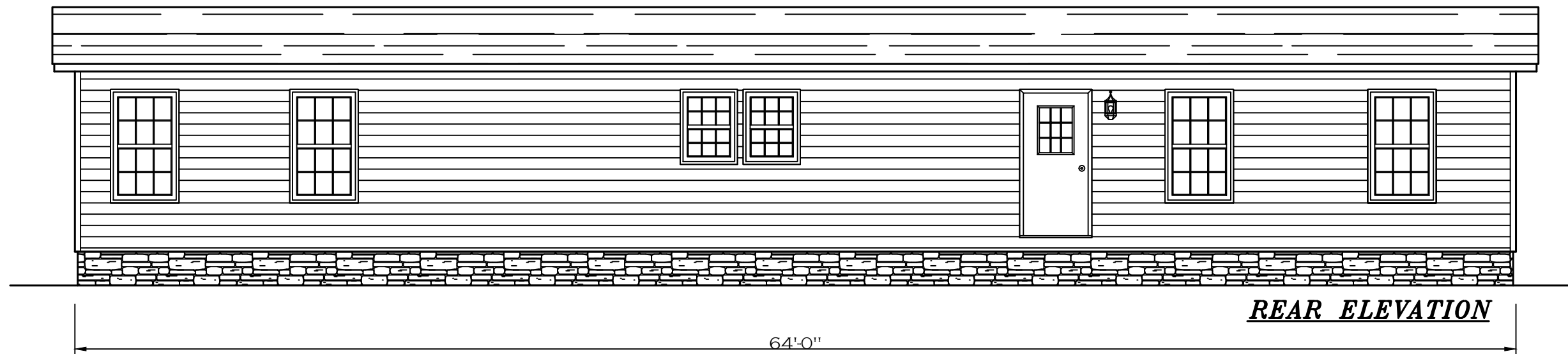


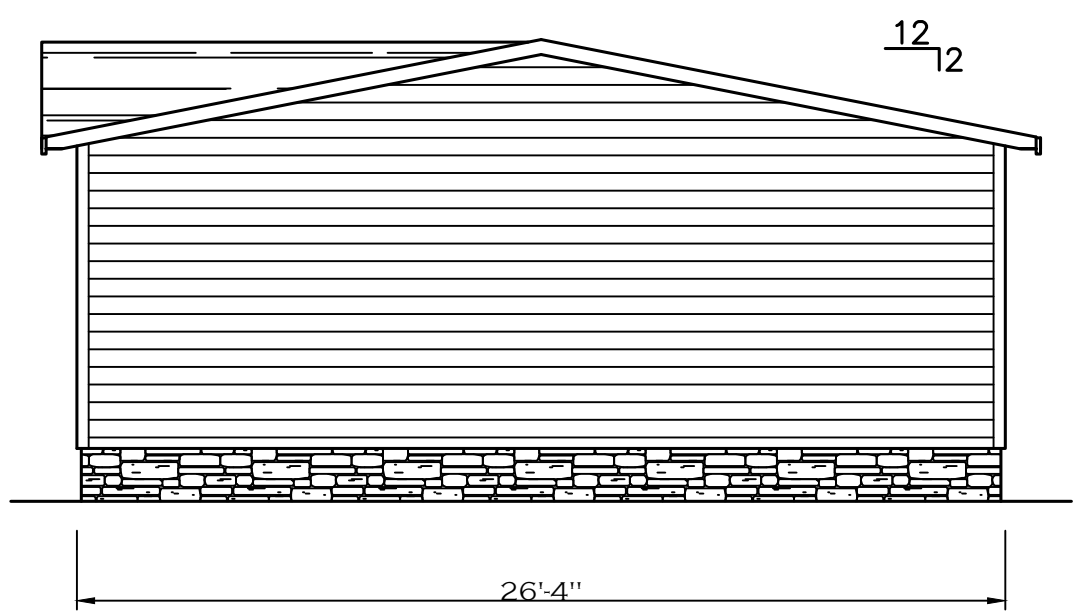
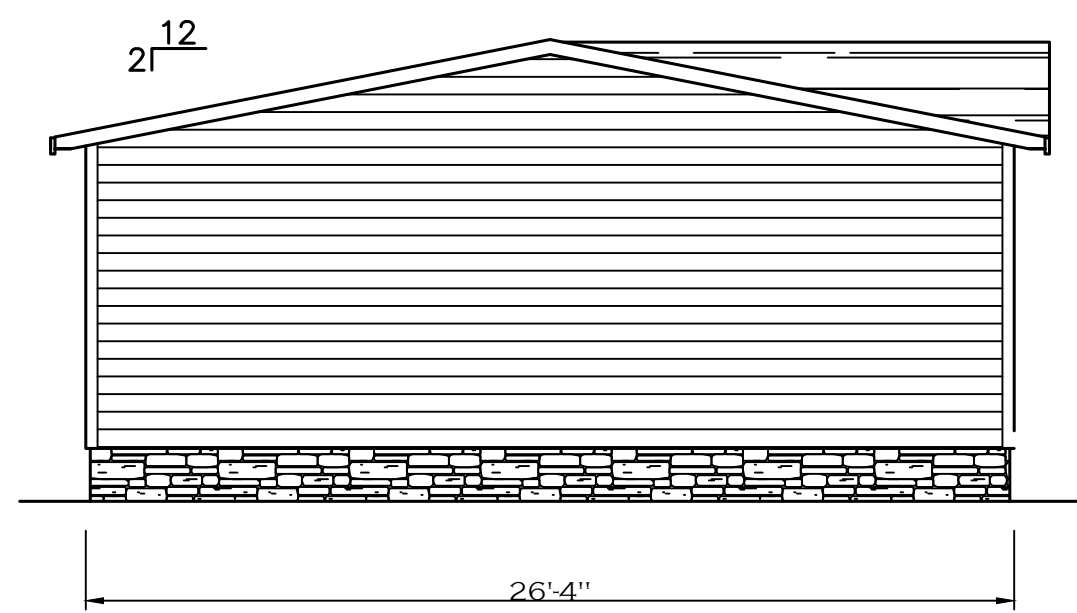
REVISION	DATE	DESCRIPTION	REVISION	DATE	DESCRIPTION	SHEET:	DRAWING #	MODEL #	DATE	SCALE	PRODUCT DESIGNER	STD PLAN "CONDITIONED":	
1	5/18/21	UPDATED FIELD NOTES				DRAIN 2D DRAIN LINES	34M186	THE ISLAND BREEZE 64 (28'X64')				1,685 FT ²	
2	5/29/22	UPDATED FIELD NOTES					MVP28644A	SERIES: M.V.P.				REV. BY: DCS	
3	8/30/22	ADDED 72" SHOWER OPTION					DATE: 02/25/2019	SCALE: N.T.S.	PRODUCT DESIGNER: DANIEL SHELDON			REV. DATE: 07/31/2023	

Clayton Clayton - 934
1420 Mountain Rd, Andersonville, TN 37705
PH: 865.494.7800 FAX: 865.494.0243

HILBORN, WERNER, CARTER,
AND ASSOCIATES, INC.
1627 SOUTH MYRTLE AVE.
CLEARWATER, FL. 33756



REAR ELEVATION



FRONT ELEVATION

SHEET:
ELEVATIONS

EXTERIOR
ELEVATIONS

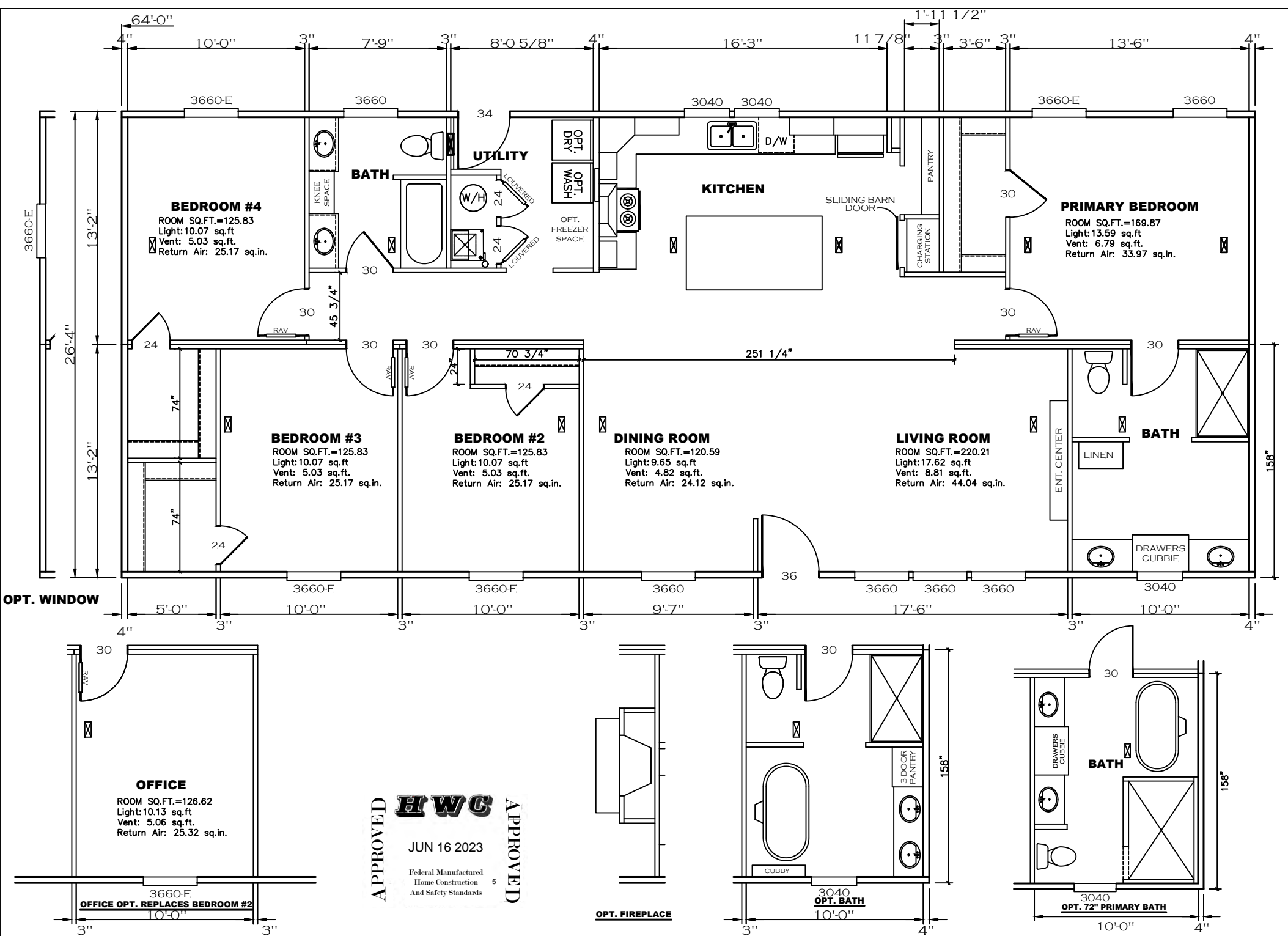
Clayton Clayton - 934
1420 Mountain Rd, Andersonville, TN 37705
PH: 865.494.7800 FAX: 865.494.0243

HILBORN, WERNER, CARTER,
AND ASSOCIATES, INC.
1627 SOUTH MYRTLE AVE.
CLEARWATER, FL. 33756

DRAWING # 34M221
MODEL # MVP28644A
DATE: 08/1/2023 SCALE: N.T.S.

MODEL:
THE ISLAND BREEZE 64 (28'X64')
SERIES: M.V.P.
PRODUCT DESIGNER: BRIAN RIFFEY

STD PLAN "CONDITIONED":
1,685 FT²
REV. BY:
REV. DATE:

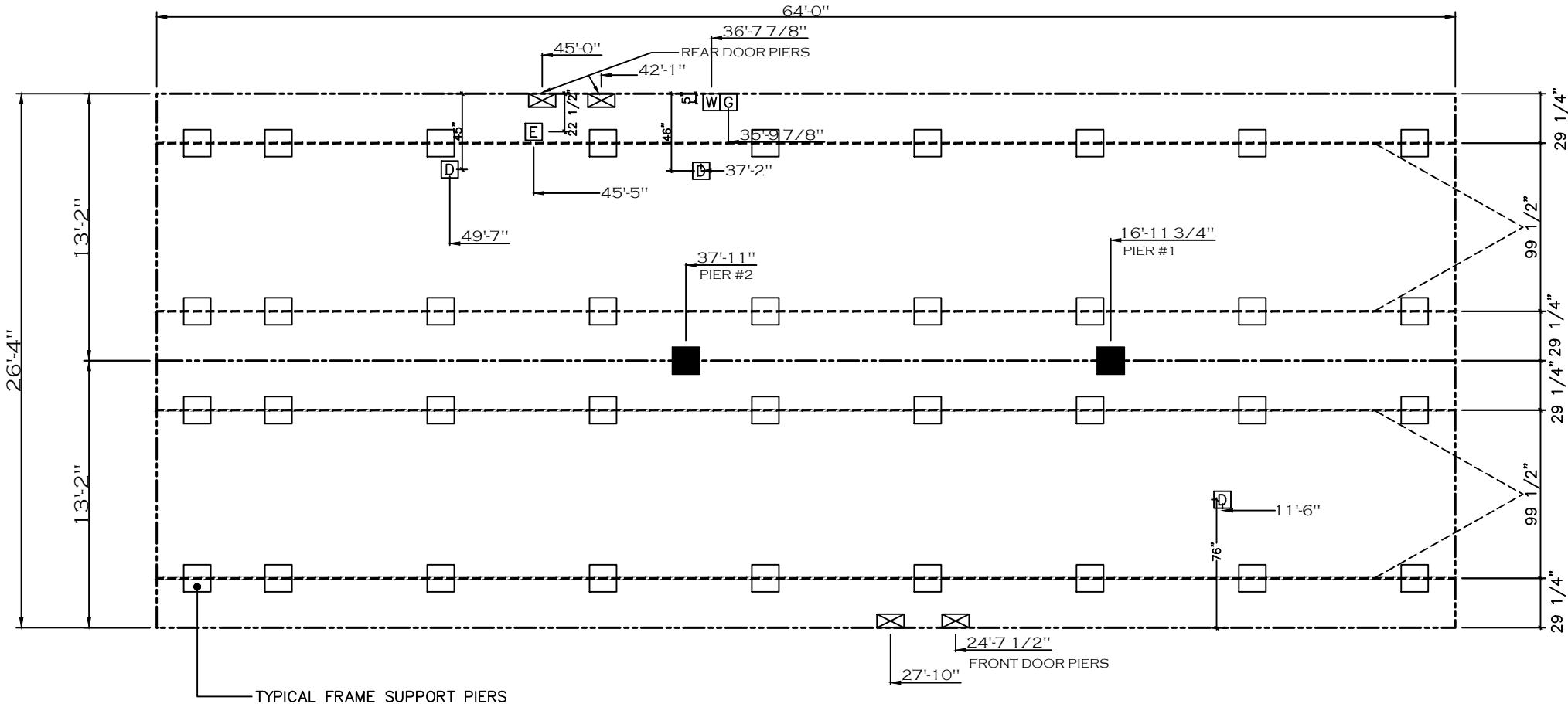


SHEET:	FP	FLOOR PLAN	Clayton - 934 1420 Mountain Rd, Andersonville, TN 37705 PH: 865.494.7800 FAX: 865.494.0243	HILBORN, WERNER, CARTER, AND ASSOCIATES, INC. 1627 SOUTH MYRTLE AVE. CLEARWATER, FL. 33756	DRAWING #: 34M221 MODEL #: MVP28644A DATE: 05/11/23 SCALE: N.T.S.	MODEL: THE ISLAND BREEZE 64 (28'X64') SERIES: M.V.P. PRODUCT DESIGNER: DANIEL SHELDON	STD PLAN "CONDITIONED": 1,685 Ft ² REV. BY: REV. DATE:
--------	----	------------	--	---	--	---	---

20 psf Roof Live Load		
Column Pier #	Distance from Hitch	Pier Load (lbs)
1	16.9791	4535
2	37.917	4535

- GENERAL NOTES:
- PIER LOADS SHOWN ARE TO BE USED TO SIZE THE FOOTINGS BELOW THE MARRIAGEWALL FOR COLUMN SUPPORT PIERS. REFER TO TABLES 6b AND 6c IN THE INSTALLATION MANUAL FOR LOAD ON FRAME PIER FOOTINGS FOR HOMES THAT DO NOT REQUIRE PERIMETER BLOCKING. REFER TO TABLES 7b AND 7c IN THE INSTALLATION MANUAL FOR LOAD ON FRAME PIER FOOTINGS THAT REQUIRE PERIMETER BLOCKING. REFER TO TABLES 10 AND 10a TO DETERMINE FOOTING SIZE FOR ALL PIERS.
 - REFER TO TABLE 9 FOR PIER CONFIGURATION AND MAXIMUM ALLOWABLE HEIGHTS. CROSS REFERENCE THE PIER HEIGHT WITH THE MAXIMUM ALLOWABLE FLOOR HEIGHT LISTED IN THE FRAME TIEDOWN CHARTS (TABLE 18, 19, AND 20).
 - FLOOR WIDTH SHOWN IS FOR STANDARD PRODUCT ONLY. CONTACT THE MFG PLANT FOR SPECIFICATIONS OF OPTIONS ORDERED.
 - SERVICE DROP LOCATIONS IDENTIFIED ARE APPROXIMATE.
 - THE MAXIMUM SPACING FOR FRAME SUPPORT PIERS FOR 8" I-BEAMS IS 8 FEET, 10" & 12" I-BEAMS ARE 10 FEET.

4" MUST BE ADDED (2" PER ENDWALL) TO OVERALL LENGTH WITH 2X6 WALLS.



20 lb ROOF LOAD SIDEWALL OPENING PIER LOAD 28' BOX WIDTH	SIDEWALL OPENING (FT) REQUIRED PIER LOAD (LBS)					
	3	4	5	6	8	10
	1175	1330	1485	1640	1950	2260

*FOR 30 lb & 40 lb ROOF LOAD REFER TO TABLES 7b & 7c IN THE INSTALLATION MANUAL.