

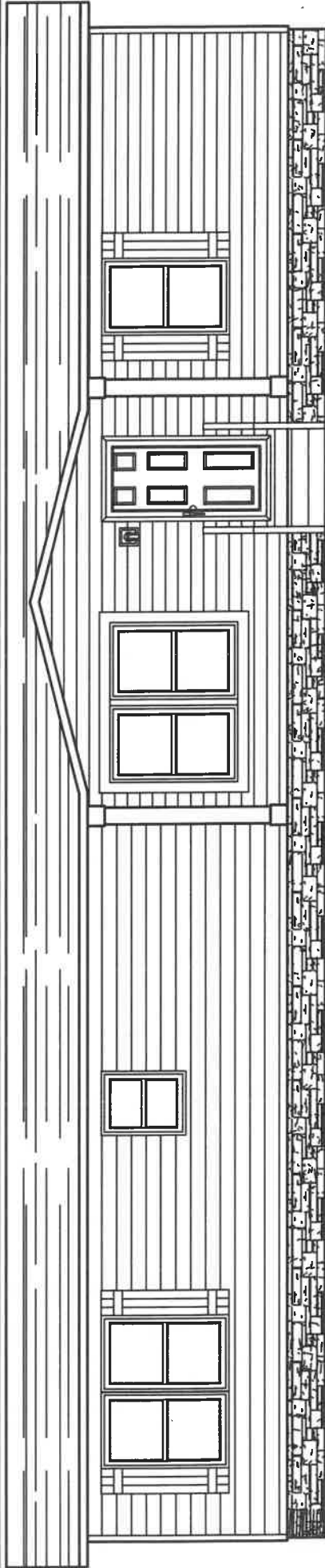
DRAWING # 34M280
 MODEL # 34MP32603A26
 DATE: 03/20/2026 SCALE: N.T.S.
 HILBORN WERNER, CARTER,
 AND ASSOCIATES, INC.
 1400 W. UNIVERSITY BLVD.
 CLEARWATER, FL 33758
 PH: 886.484.7600 FAX: 886.654.0243

CLAYTON
 Clayton, spa
 1400 W. UNIVERSITY BLVD.
 CLEARWATER, FL 33758
 PH: 886.484.7600 FAX: 886.654.0243

2D DRAIN LINES
 2x4

REVISION DATE	DESCRIPTION	REVISION DATE	DESCRIPTION

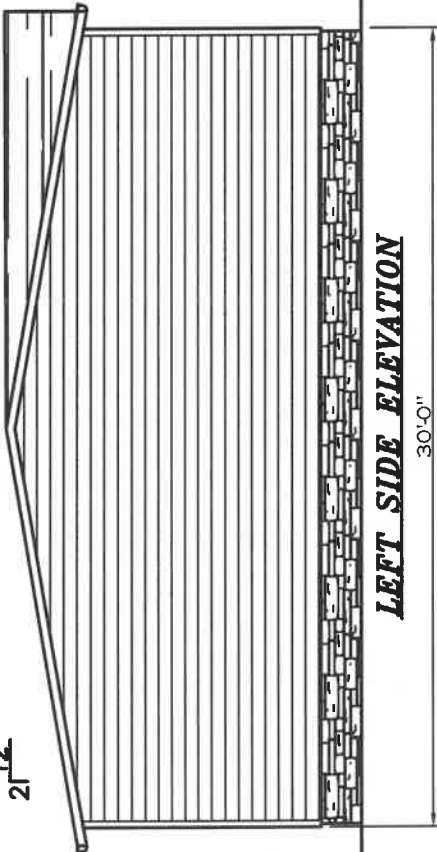
STD PLAN "CONFINED"; 1,800 FT
 REV. BY:
 PRODUCT DESIGNER: BRIAN K. RIFFEY
 REV. DATE:



FRONT ELEVATION

60'-0"

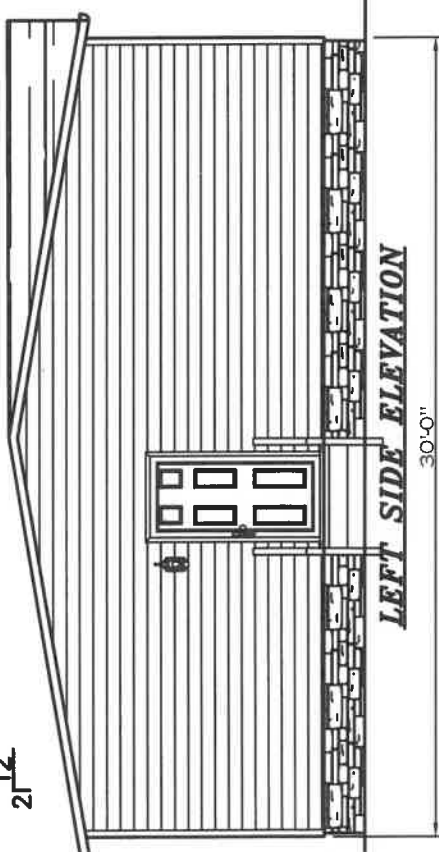
2/12



LEFT SIDE ELEVATION

30'-0"

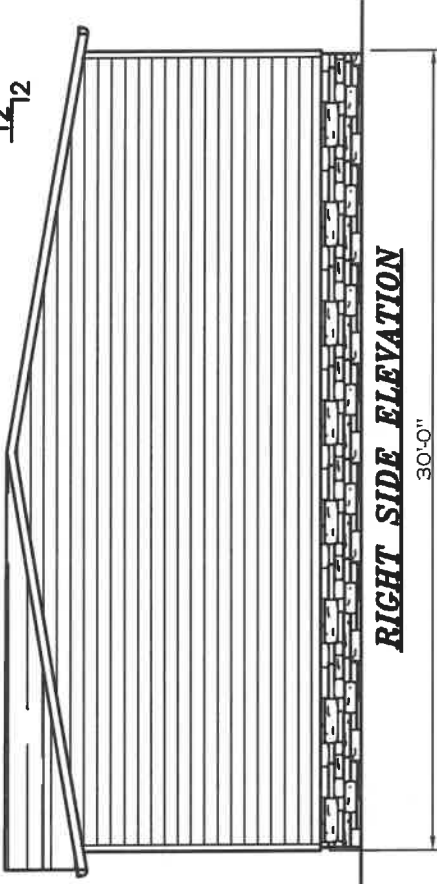
2/12



RIGHT SIDE ELEVATION

30'-0"

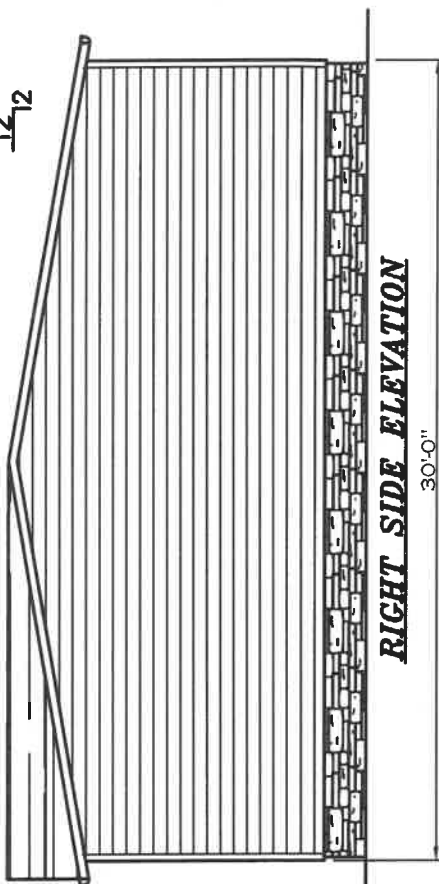
12/12



RIGHT SIDE ELEVATION

30'-0"

12/12



RIGHT SIDE ELEVATION

30'-0"

FRONT ELEVATION

Clayton Clayton - 804
1420 N. Main St., Memphis, TN 37705
PH: 955-9947, 7600 FAX: 955-494, 0246

HILBORN, WERNER, CARTER,
ARCHITECTS, INC.,
1927 SOUTH WIRTH BL. AVE.
CLEARWATER, FL 33766
DRAWING # 34M280
MODEL # 34MVP 32603A26
DATE 03/20/2026 SCALE N.T.S.

MODEL: 32'X60' MOUNTAIN BREEZE
SERIES: M.V.P.
PRODUCT DESIGNER: BRIAN K. RIFFEY
STD. PLAN "CONDITIONED": 1,800 FT²
REV. BY:
REV. DATE:

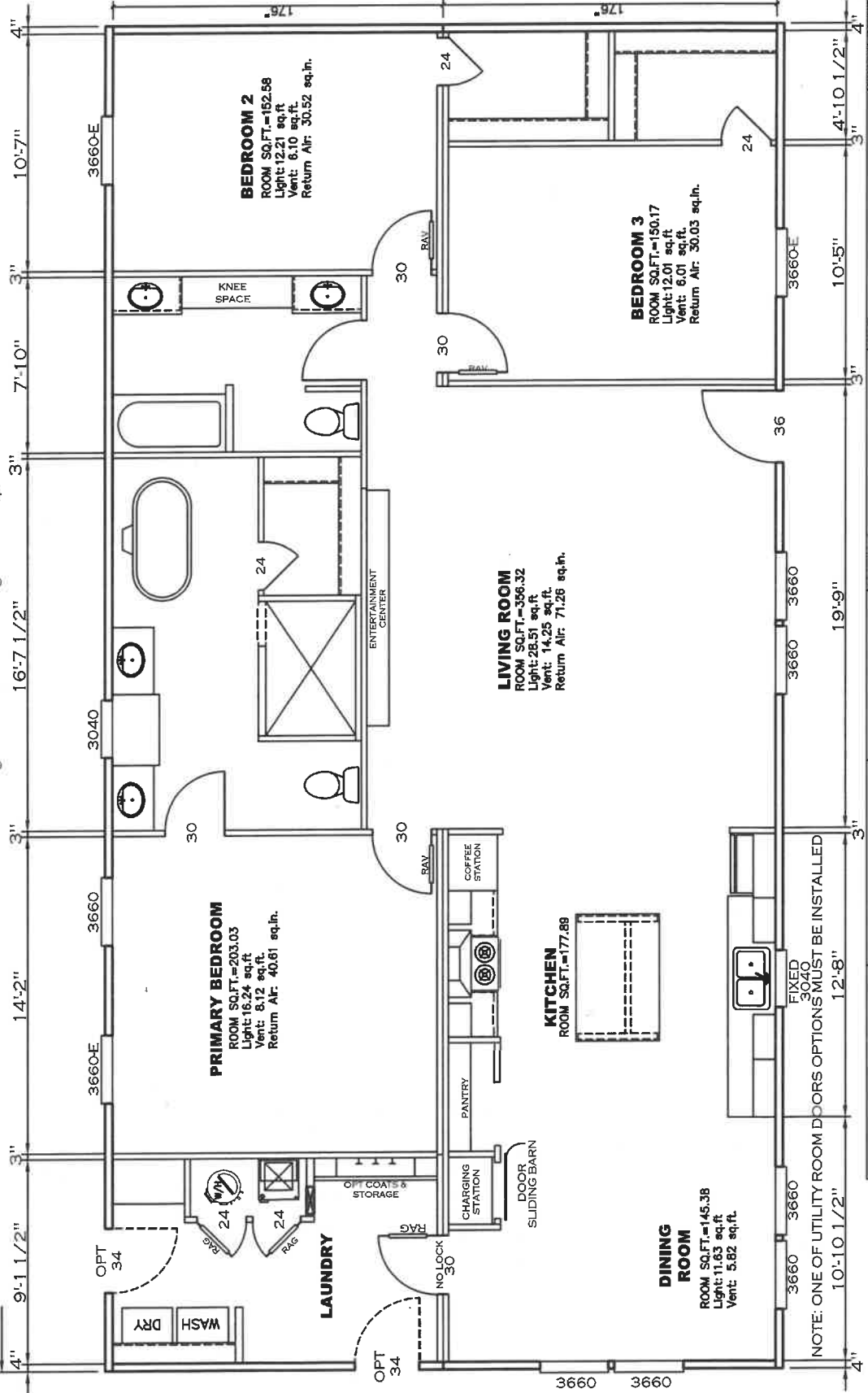
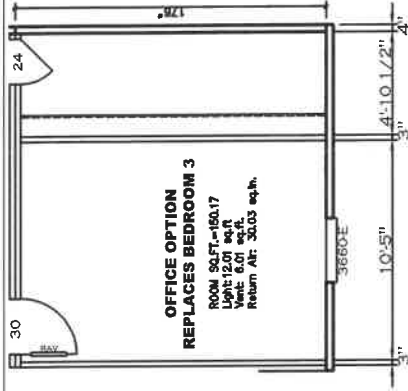
APPROVED



MAR 30 2026

Federal Manufactured
Home Construction 6
And Safety Standards

APPROVED

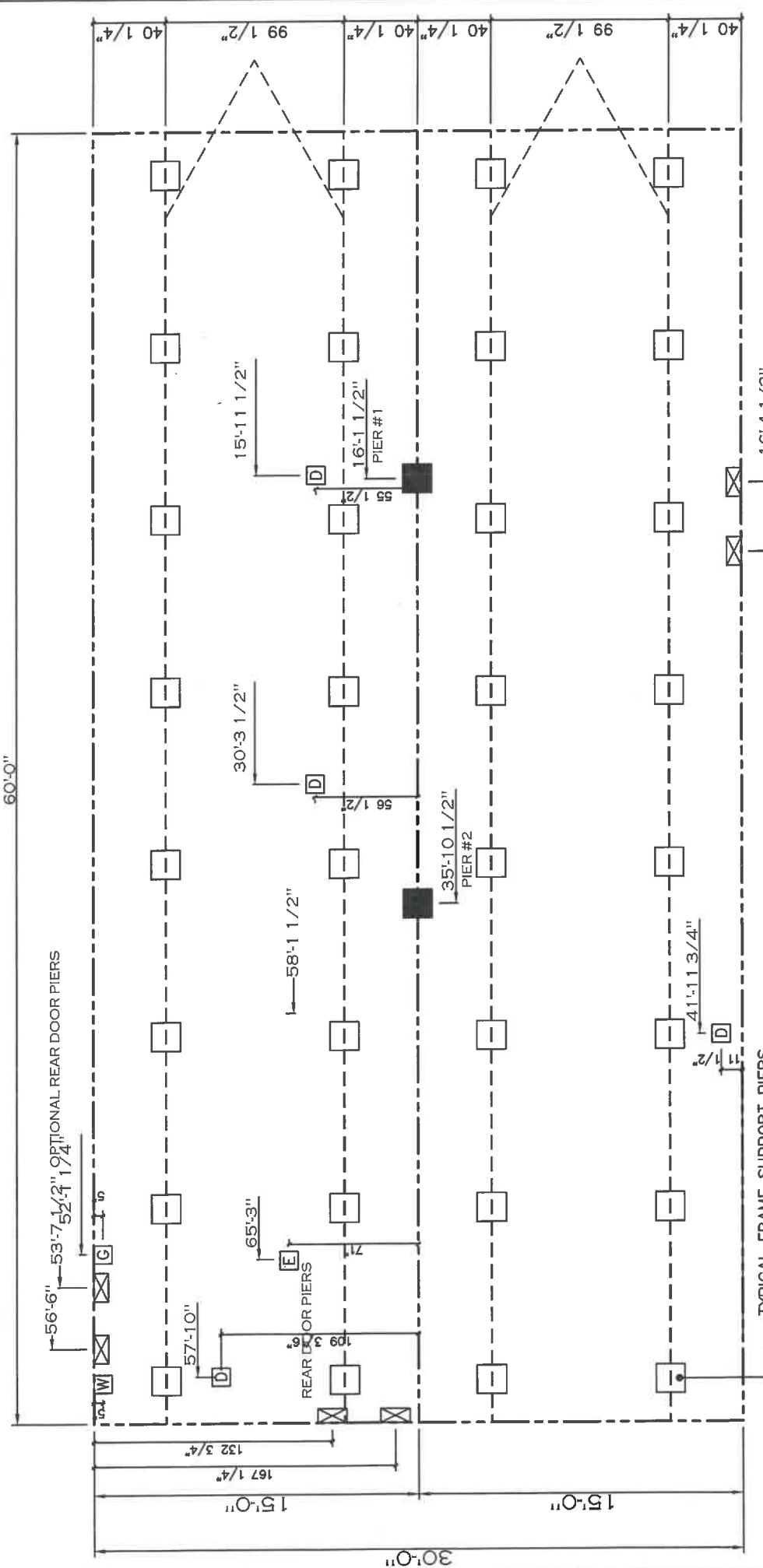


FLOOR PLAN	Clayton Clayton - 934 1420 Mountain Rd. Andersonville, TN 37705 PH: 865.484.7800 FAX: 865.484.0243	DRAWING # 34M280 MODEL # 34MVP 32603A26 DATE: 03/20/2028 SCALE: N.T.S.	MODEL: 32'X60' MOUNTAIN BREEZE SERIES: M.V.P. PRODUCT DESIGNER: BRIAN K. RIFFEY	STD PLAN "CONDITIONED": 1,800 FT ² REV. BY: REV. DATE:
-------------------	--	---	--	--

GENERAL NOTES:
 1. PIER LOADS SHOWN ARE TO BE USED TO SIZE THE FOOTINGS BELOW THE MARRIAGEWALL FOR COLUMN SUPPORT PIERS. REFER TO TABLES 6b AND 6c IN THE INSTALLATION MANUAL FOR LOAD ON FRAME PIER FOOTINGS FOR HOMES THAT DO NOT REQUIRE PERIMETER BLOCKING. REFER TO TABLES 7b AND 7c IN THE INSTALLATION MANUAL FOR LOAD ON FRAME PIER FOOTINGS THAT REQUIRE PERIMETER BLOCKING. REFER TO TABLES 10 AND 10a TO DETERMINE FOOTING SIZE FOR ALL PIERS.

2. REFER TO TABLE 9 FOR PIER CONFIGURATION AND MAXIMUM ALLOWABLE HEIGHTS. CROSS REFERENCE THE PIER HEIGHT WITH THE MAXIMUM ALLOWABLE FLOOR HEIGHT LISTED IN THE FRAME TIEDOWN CHARTS (TABLE 18, 19, AND 20). FLOOR WIDTH SHOWN IS FOR STANDARD PRODUCT ONLY. CONTACT THE MFG PLANT FOR SPECIFICATIONS OF OPTIONS ORDERED.

3. SERVICE DROP LOCATIONS IDENTIFIED ARE APPROXIMATE. THE MAXIMUM SPACING FOR FRAME SUPPORT PIERS FOR 8" I-BEAMS IS 8 FEET, 10" & 12" I-BEAMS ARE 10 FEET.



20 psf Roof Live Load		
Column	Distance from Hitch	Pier Load (lbs)
1	16.083	4863
2	35.917	4863

PIER LEGEND	
□	= SUPPORT UNDER MATING OPENING
■	= SUPPORT AT MATING COLUMN
⊗	= SUPPORT UNDER MATING WALL
■	= PIER PORCH/RECESSED ENTRY
□	= PIER MAIN BEAM
⊗	= PIER PERIMETER

SERVICE DROP LEGEND	
E	= ELECTRICAL DROP
W	= WATER INLET
D	= DWV PLUMBING DROP
G	= GAS INLET

20 lb ROOF LOAD	
SIDEWALL OPENING PIER LOAD	
28' BOX WIDTH	
3	1162
4	1315
5	1467
6	1620
8	1925
10	2230

*FOR 30 lb & 40 lb ROOF LOAD REFER TO TABLES 7b & 7c IN THE INSTALLATION MANUAL.

DRAWING # 34M280
 MODEL # 34MVP32603A26
 DATE: 3/18/2026
 SCALE: N.T.S.

HILBORN, WERNER, CARTER, AND ASSOCIATES, INC.
 1420 Mountain Rd, Andersonville, TN 37705
 PH: 865.494.7800 FAX: 865.494.0243

Clayton
 Clayton - 934
 1627 SOUTH MYRTLE AVE.
 CLEARWATER, FL 33758

MODEL: 32'x60' MOUNTAIN BREEZE
 SERIES: M.V.P.
 REV. BY: M.V.P.
 PRODUCT DESIGNER: BRIAN RIFFEY
 REV. DATE: 1,800 FT.

PIER LOADS